

BAUER

Solartechnik GmbH

BS-6MHBB5-GG 340 - 350 W

glass/glass - transparent



PERFORMANCE GUARANTEE

30 years of product warranty and a linear performance guarantee over a period of 30 years



CERTIFICATION

Permanent in-house quality control, multiple certifications by accredited inspection bodies



EFFICIENCY

High efficiency for optimum yield - innovations directly influence the production process



POSITIVE POWER TOLERANCE

Exclusive delivery of solar modules with positive power tolerance only



N-TYPE BIFACIAL TECHNOLOGY

Double-sided solar cells and a transparent back side increase the potential power output by up to 30%



HALF-CELL TECHNOLOGY

Double the amount of cells on the same surface area reduces power loss in case of e.g. shadowing



WEATHERPROOF

Standardized mechanical load test guards against damage from wind and weather



GERMAN GUARANTOR

In case of need it is ensured that a German company assumes the claim settlement



SAFETY

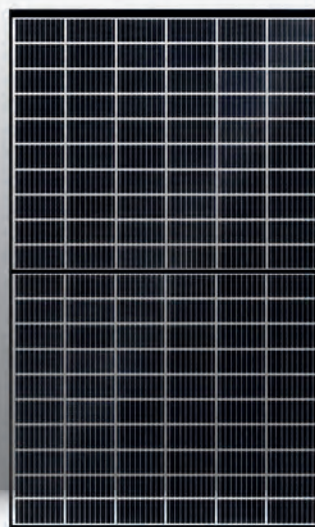
High-quality components ensure maximum protection in all weather conditions



PID TEST

The solar cells of our high performance modules are tested for PID

BS-6MHBB5-GG



FRONTSIDE



BACKSIDE

PROVEN & GUARANTEED BY
BAUER SOLARTECHNIK
HIGH QUALITY STANDARDS BY GERMAN ENGINEERS

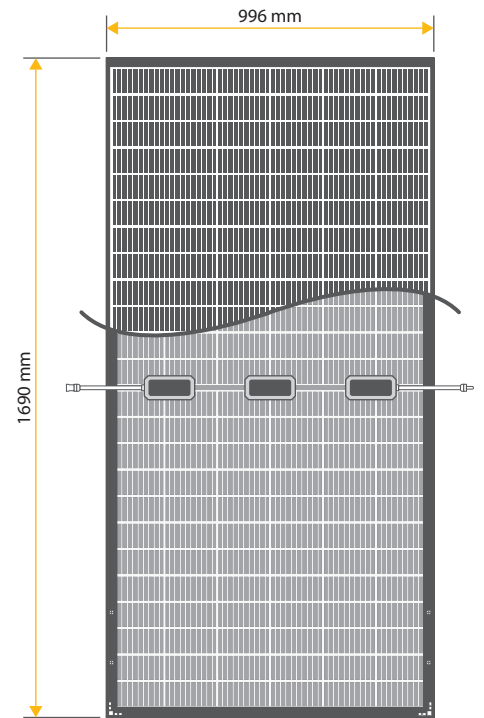
BS-6MHBB5-GG 340 - 350 W

MECHANICAL DATA

Module dimensions	1690 x 996 x 30 mm
Weight	21,5 kg
Frame	Anodized aluminium alloy (black)
Frontside	Glass with anti-reflection technology
Embedding material	EVA
Backside	Glass with anti-reflection technology
Solar cells	120 monocrystalline n-type bifacial half-cells 9BB
Connection	IP ≥ 67, 3 bypass diodes
Cable & connector	1x4 mm ² , 1100 mm, MC4 compatible

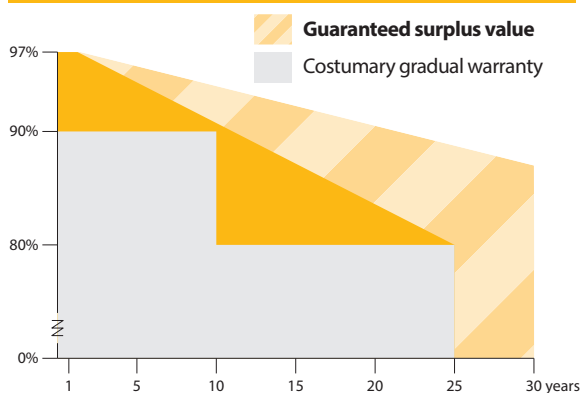
OPERATIONAL CONDITIONS

Operating temperature	-40 to 85°C
Static load	5400 Pa (snow/wind)
Hail	Ø 25 mm at 23 m/s



ELECTRICAL DATA ¹		BS-340-6MHBB5-GG	BS-345-6MHBB5-GG	BS-350-6MHBB5-GG
Maximum power	P _{max} (W)	340	345	350
Power output tolerance	P _{max} (%)	0 ~ +3	0 ~ +3	0 ~ +3
Open circuit voltage	V _{oc} (V)	41,80	42,10	42,40
Short circuit current	I _{sc} (A)	10,17	10,22	10,28
Voltage at max. power	V _{mpp} (V)	35,10	35,40	35,70
Current at max. power	I _{mp} (A)	9,70	9,75	9,81
Module efficiency	η _m (%)	20,20	20,50	20,79
Nominal operating cell temperature	NOCT (°C)	45 ± 2		
Temperature coefficient of V _{oc}	T _k (V _{oc})	-0,260 %/°C		
Temperature coefficient of I _{sc}	T _k (I _{sc})	+0,046 %/°C		
Temperature coefficient of P _{mp}	T _k (P _{mp})	-0,320 %/°C		
Maximum system voltage DC (TÜV)	(V)	1500		
Maximum series fuse rating	(A)	20		



LINEAR PERFORMANCE GUARANTEE



WARRANTY CONDITIONS²

Product warranty	30 years
Performance guarantee	30 years (min. 87% after 30 years)

QUALIFICATION & CERTIFICATION

IEC 61215	 
IEC 61730	

PACKAGING UNITS

Modules per pallet	35 pcs
Modules per truck	910 pcs

¹Values under Standard Test Conditions (STC): air mass 1,5 AM, irradiance 1000 W/m², cell temperature 25°C. STC measuring tolerance: ±3 % (P_{max}), ±10 % (V_{max}, I_{mp}, V_{OC}, I_{SC}). ²Nominal value is specified in the written warranty conditions. A possible light-induced degradation in power is not taken into account. Note: Please read safety instructions and installation manual before using this product. Subject to change. © 2020 Bauer Energiekonzepte GmbH. Effective 3rd of november 2020.

